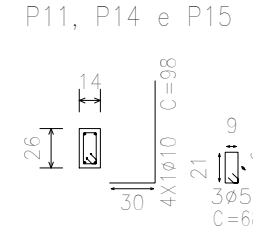
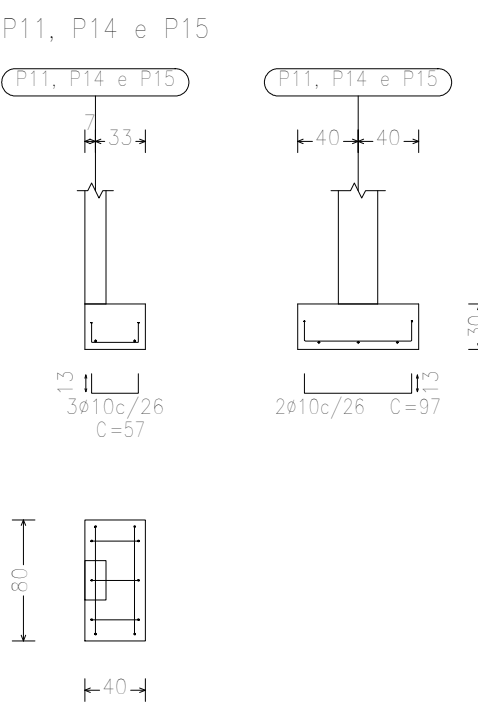
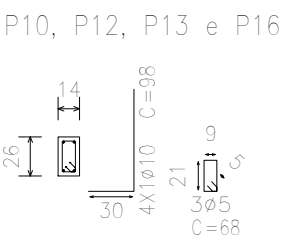
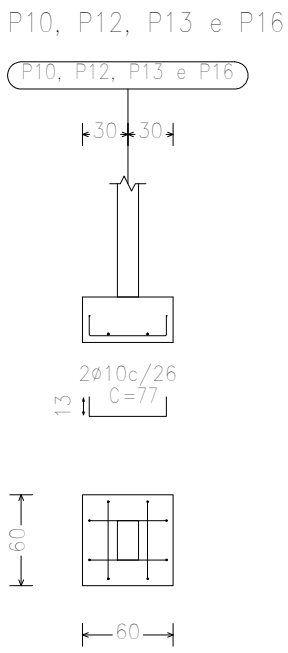
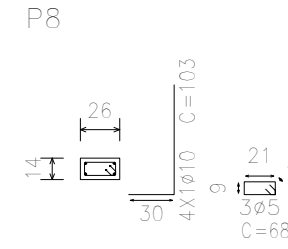
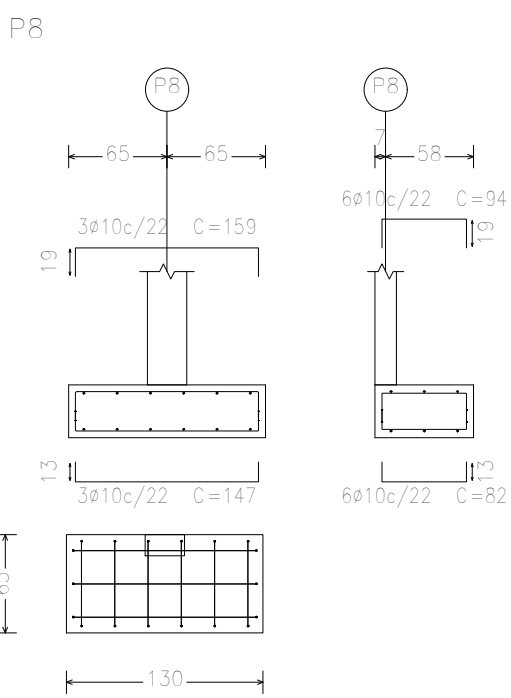
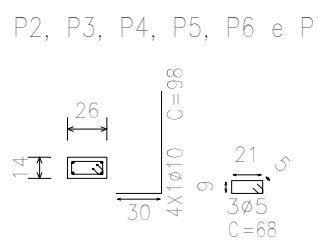
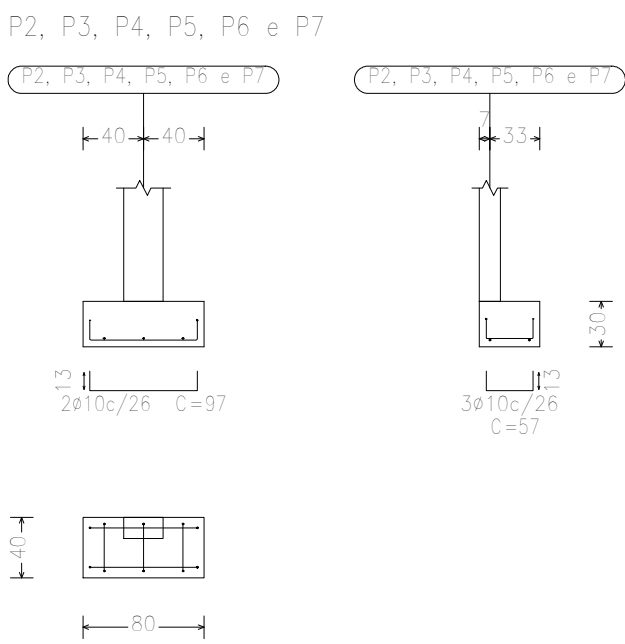
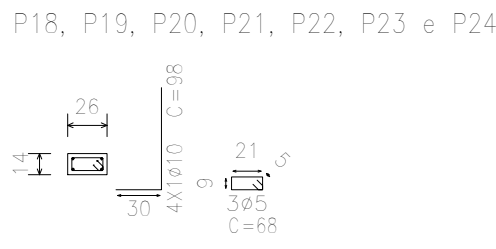
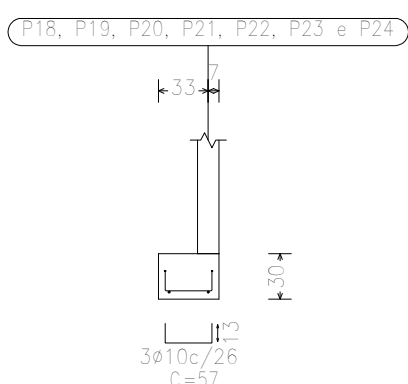
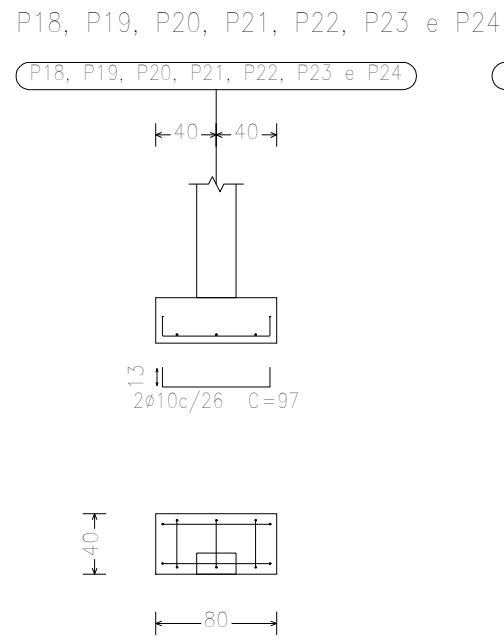
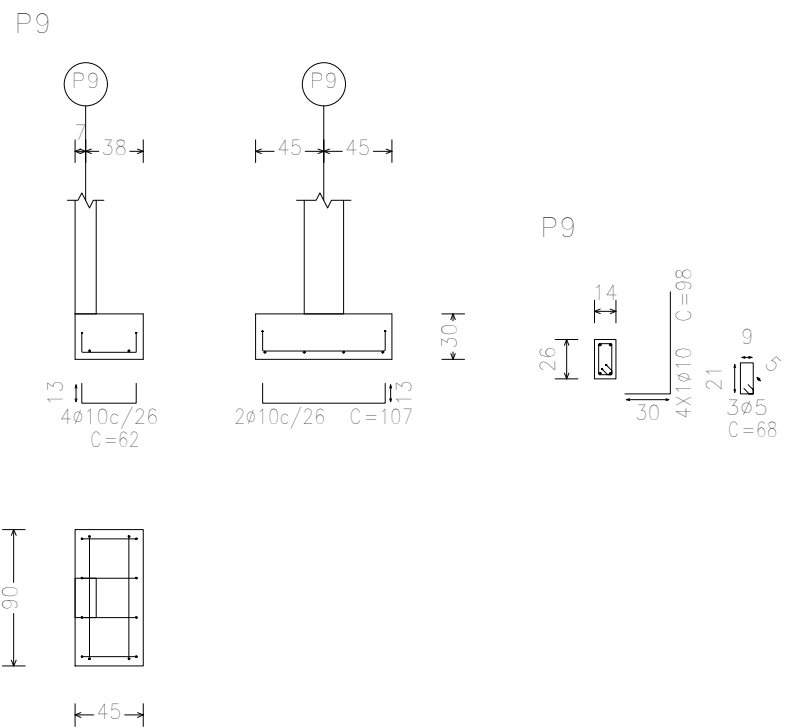
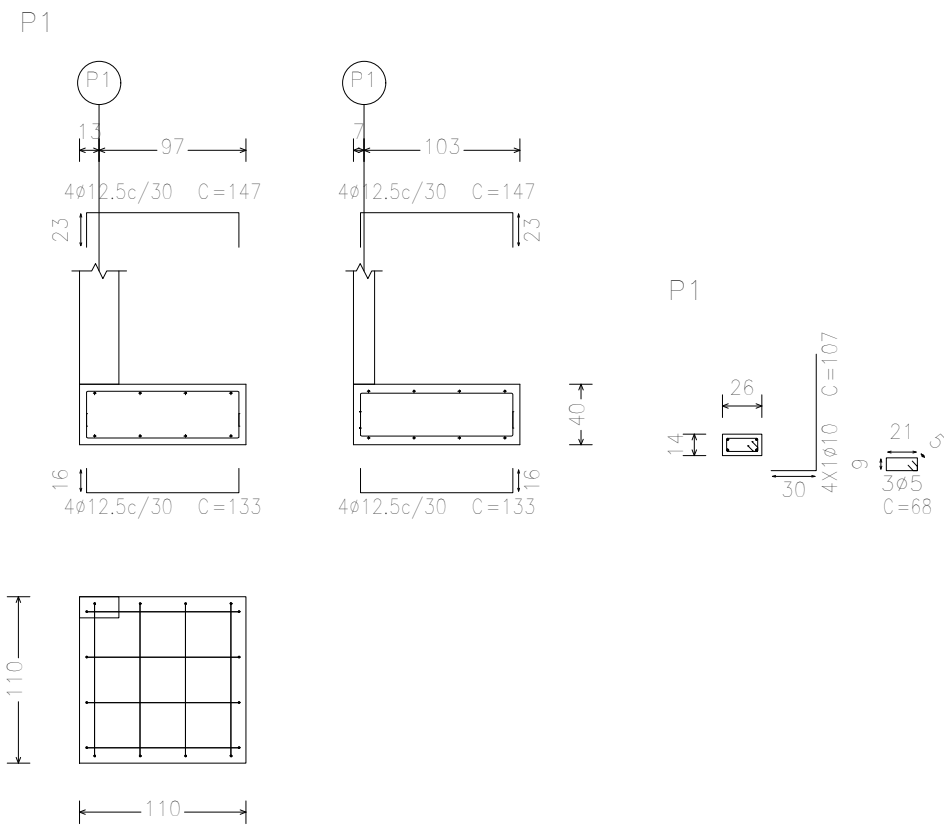


Resumo Aço Subsolo Detalhamento fundação		Comp. total (m)	Peso+10% (kg)	Total
CA-50	Ø10	210,9	143	167
CA-60	Ø5	49,0	8	
Total				175

QUADRO DE ELEMENTOS DE FUNDAÇÃO					
Referências	Dimensões (cm)	Altura (cm)	Armadura inf. X	Armadura inf. Y	Armadura sup. X
P1	110x110	40	4Ø12.5c/30	4Ø12.5c/30	4Ø12.5c/30
P2, P3, P4, P5, P6 e P7	80x40	30	2Ø10c/26	3Ø10c/26	3Ø10c/22
P8	130x65	35	3Ø10c/22	4Ø10c/22	3Ø10c/22
P9	45x40	30	4Ø10c/26	2Ø10c/26	
P10, P12, P13 e P16	60x60	30	2Ø10c/26	2Ø10c/26	
P11, P14 e P15	40x80	30	3Ø10c/26	2Ø10c/26	
P17	100x100	30	4Ø10c/26	4Ø10c/26	4Ø10c/26
P18, P19, P20, P21, P22, P23 e P24	80x40	30	2Ø10c/26	3Ø10c/26	



Proprietário:			Autor:		
Execução:			Fiscalização:		
Título: PROJETO DE ESTRUTURAS DO MURO DE ENTORNO DA ESTAÇÃO ELEVATÓRIA DE ESGOTO - RIACHO DA CRUZ/RN					
Endereço: ZONA URBANA, RIACHO DA CRUZ/RN					
Conteúdo: PLANTA DE FUNDAÇÕES					Prancha: 01/06
Desenho:			Escala: INDICADAS	Data: OUTUBRO/2025	
Modificação:			Observação:		
DIREITOS AUTORAIS RESERVADOS: PROIBIDA QUALQUER MODIFICAÇÃO NO TODO OU EM PARTE, SEM AUTORIZAÇÃO POR ESCRITO DO AUTOR DO PROJETO					